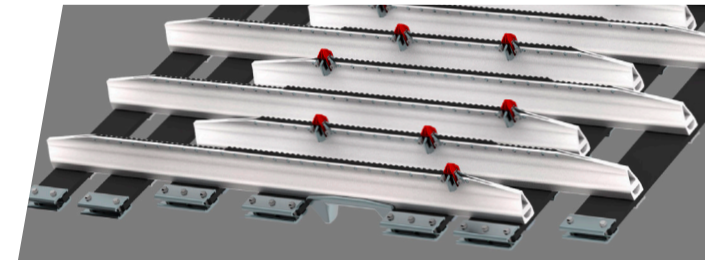
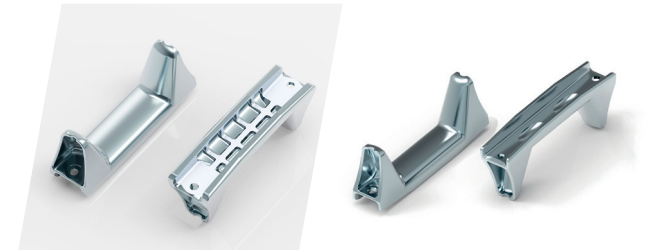
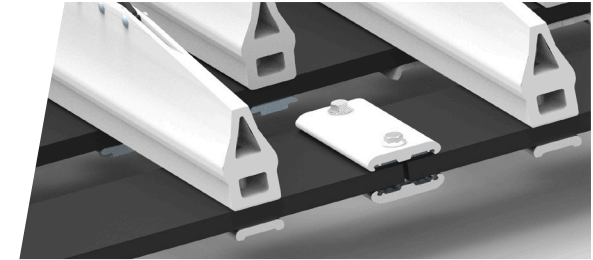


# Combi track



## COMBI TRACK

The perfect combination of materials, with lightweight aluminium cleats and a heavy-duty steel edge results for optimum traction. These strong, extremely wear-resistant track cleats are notable for high strength and optimum power transmission. The toothed steel edge and additional track elements make for optimum travel and climbing behavior on all snow-covered surfaces.

## AREAS OF APPLICATION

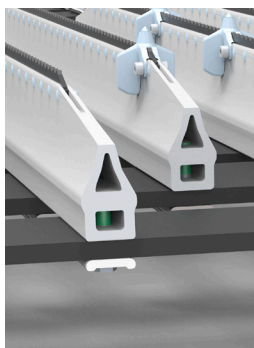
The Combi tracks can be used everywhere, from "normal" terrain to steep slopes. Their toothed steel edge encounters no problems during dozing and preparation work, even on artificial snow or icy slopes. The toothed steel edge also provides effective protection against damage and wear caused by the soil when the vehicle is driven on thin layers of snow.

Vehicle type	Combi track	CombiPlus track	Performance Combi track	Overall width for track width (mm)				Weight* per chain set	Cleats pcs.	Cleat height	Cleat width	Distance of belts	Number of belts	Thickness of belts	Drive sprocket gear
				1,830	2,320	2,350	2,370								
PB 100 (822)	810 mm			2,480				760 kg	68	82.1 mm	40 mm	116.5 mm	10 mm	13	
	970 mm			2,800				760 kg							
	1,130 mm			3,120				960 kg							
PB 400 (824)	1,648 mm					4,210		1,700 kg	75	108 mm	40 mm	116.5 mm	5	15 mm	14
PB 400 (827)		1,648 mm				4,210		2,140 kg	71	115 mm	40/45 mm	123.5 mm	6		
PB 600 (828)		1,648 mm				4,210		2,180 kg	74	115 mm	40/45 mm	123.5 mm	6		
		1,648 mm				4,210		2,020 kg	68	120 mm	45 mm	135 mm	7		
PB 600 E+ (848)		1,648 mm				4,210		2,240 kg	76	115 mm	40/45 mm	123.5 mm	6		
		1,648 mm				4,210		2,080 kg	69	120 mm	45 mm	135 mm	7		
PB 800 (829)			1,648 mm				4,230	2,250 kg	74	120 mm	45 mm	135 mm	6	13	

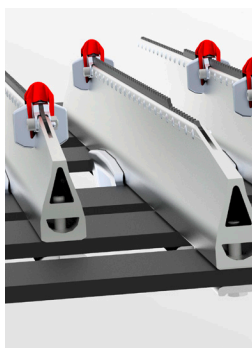
[www.pistenbully.com](http://www.pistenbully.com)

\*according to ISO 1176/M6, Tara weights may vary depending on equipment.

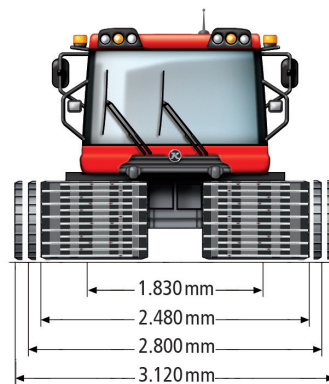
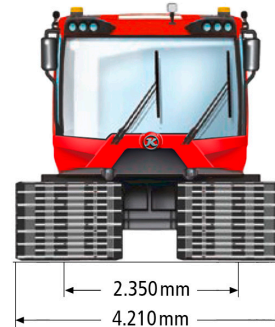
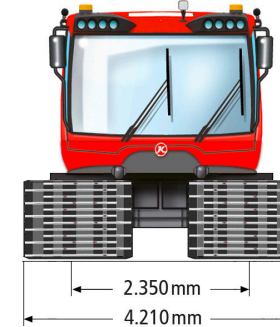
6-belt track



7-belt track



PB 100 (822)


 PB 400 (824)  
PB 400 (827)

 PB 600 (828)  
PB 600 E+ (848)


PB 800 (829)

