

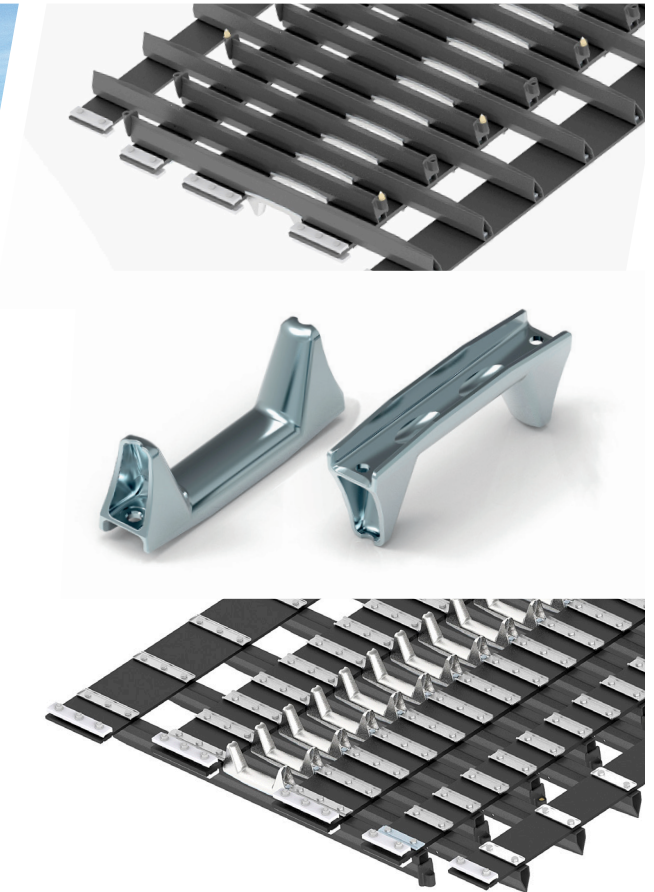
# Steel track

SIMPLE. RUGGED. TOUGH.

*PistenBully*<sup>®</sup>

Steel track

1/2023 KGF

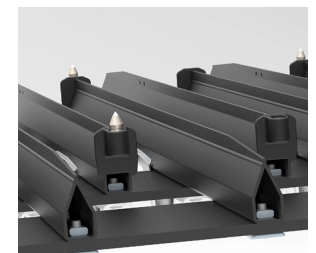


## STEEL TRACK

The closed sections are made from highly rigid, low-wear fine grain steel. The sharp profile edge penetrates even hard surfaces well. With a full complement of spikes, the steel tracks have good climbing performance and lateral stability.

## AREAS OF APPLICATION

Steel tracks are designed for extreme tasks, maximum thrust in steep terrain and on ice and rock. Even on heavy machine-made snow, they are perfectly suited for preparation and dozing work.

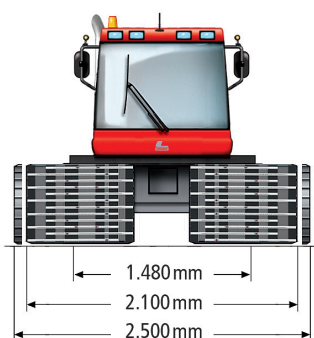


Vehicle type	Steel track	Overall width for track width (mm)					Weight* per chain set	Cleats pcs.	Cleat height	Cleat width	Distance of belts	Number of belts	Thickness of belts	Drive sprocket gear	
		1.480	1.720	1.830	2.320	2.350									
Paana (858)	620 mm	2.100					560 kg	62	62 / 71 mm	35 mm	116,5 mm	2	10 mm	13	
	820 mm	2.500					760 kg					3			
PB 100 / Trail (822)	825 mm			2.510			1.350 kg	68	100 mm	40 mm		3			15
	970 mm			2.800			1.460 kg					4			
PB 400/ Trail/ Trail narrow (824)	800 mm		2.520			3.150	1.520 kg	75				2			
	975 mm		2.870			3.500	1.680 kg				3				
	1.648 mm					4.210	2.430 kg				5				
PB 600 (828)	1.648 mm					4.210	2.470 kg	78	116,5 mm	5	15 mm	15			
PB 600 E+ (848)						4.210	2.540 kg	80							

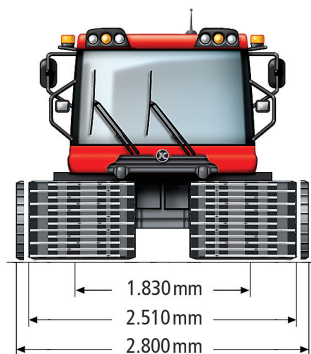
www.pistenbully.com

\*according to ISO 1176/M6, Tara weights may vary depending on equipment.

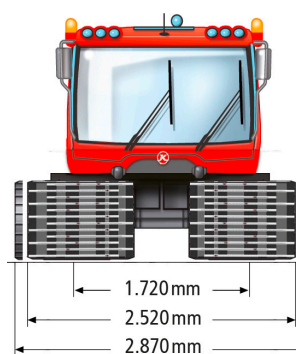
Paana (858)



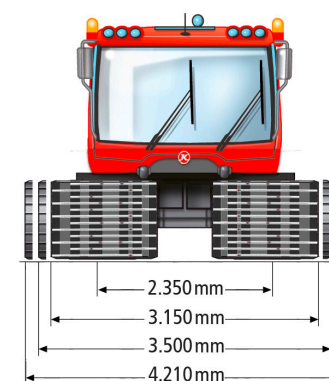
PB 100 (822)  
PB 100 Trail (822)



PB 400 Trail narrow (824)



PB 400 (824)  
PB 400 Trail (824)



PB 600 (828)  
PB 600 E+ (848)

