



KÄSSBOHRER GELÄNDEFahrZEUG AG

Laupheim, Germany

Telephone +49 (0)7392 900-0, info@pistenbully.com

AUSTRIA

Kässbohrer Austria GmbH, Kuchl

Telephone +43 (0)6244 4001-0, office@pistenbully.at

SWITZERLAND

Kässbohrer Schweiz AG, Altdorf

Telephone +41 (0)874 85-00, info@pistenbully.ch

ITALY

Kässbohrer Italia S.r.l., Bolzano

Telephone +39 0471 93-3027, info@pistenbully.it

FRANCE

Kässbohrer E.S.E., Tours-en-Savoie

Telephone +33 (0)479 1046-10, info@pistenbully.fr

USA

Kässbohrer All Terrain Vehicles Inc., Reno, Nevada

Telephone +1 (0)775 857-5000, contact@pistenbullyusa.com



KÄSSBOHRER GELÄNDEFahrZEUG AG

A red PistenBully 600 Polar GreenTech machine is shown working on a snowy slope. The machine is a tracked vehicle with a large front-mounted blade and a rear-mounted arm. It is positioned on a steep, snow-covered hillside. In the background, there are trees and a large, cylindrical metal structure, possibly a water tower or silo. The machine's tracks are visible, and it appears to be in the process of clearing or grading the snow.

PistenBully

GreenTech

PISTENBULLY 600 POLAR GREENTECH

For spring, summer, fall and winter!

An aerial photograph showing a large-scale construction or remediation project. In the foreground, a wide, flat area of light brown soil or sand is being worked on. Two red and black tracked vehicles are visible on this surface. To the right, a series of large, circular, grey concrete structures, likely storage tanks or silos, are lined up. A concrete wall runs along the edge of the work area. In the background, there are several large, rectangular structures with dark, possibly tarp-covered roofs, and some industrial buildings. The site is bordered by a dense green forest on the left and a green field on the right. The sky is overcast with grey clouds.

**RIISING TO
EVERY
CHALLENGE**



⊕ Service

- 15 service stations in Germany
- More than 135 service stations worldwide
- Always there for you, 24 hours a day / 7 days a week / 52 weeks a year
- Rapid support and delivery of spare parts
- Comprehensive range of training and advisory services

⊕ Safety

- ROPS-certified cab
- Good panoramic vision
- Low centre of gravity
- Xenon worklights

⊕ Workplace

- Comfortable cab for 2–3 persons
- Ergonomic working so that you don't get tired
- Easy access through large doors
- An air conditioning is mounted as standard

⊕ Quality that knows no compromise

- High PistenBully quality standards
- Top-quality components

⊕ Sophisticated technology for reliable and precise working

- Fuel consumption from 16l
- Planetary gearbox unit with up to 9 t thrust
- Adapted cooling system for ambient temperatures of up to +35 °C
- Transport and working width from 3 m
- Various track types and widths available, from 3–4,2 m outside width, depending on operating conditions

⊕ Designed for sensitive terrain

- High agility
- Keeps on going when wheeled vehicles have to stop



Silage harvesting The perfect solution

The PistenBully GreenTech is the ideal vehicle for harvesting silage. With its amazing agility, its unparalleled thrust and its precision, the PistenBully GreenTech operates far more efficiently than wheeled vehicles. An investment that pays off in the long term!

And the PistenBully GreenTech has even more to offer: The low centre of gravity allows the PistenBully GreenTech to drive along at an angle, as it prevents the vehicle slipping or toppling over to one side, thus offering maximum safety for the driver. In addition, its climbing power allows the building of higher silo superstructures than with conventional wheeled vehicles.

The advantages of the PistenBully GreenTech:

- Extremely precise blade control (12 functions)
- Greater operating comfort through easy vehicle handling
- Flexible, wide spreading, up to 5 m in width
- Can compact anywhere
- Transport width including X-Track chains 3 m
- Perfect view of the pusher blade
- ROPS-certified cab
- View of the track from the driver's seat

Application

- Simple and precise blade control allows silage to be deposited in thin layers of 15–20 cm
- A particular advantage: The track's running wheels drive over the track cleats repeatedly, creating a shudder effect which further compacts the silage and prepares it perfectly for storage
- The maximum torque of 2,200 Nm is already available at just 1,200–1,400 rpm, which reduces fuel consumption and operating costs



Landfill and earthwork applications For large push projects

Above and beyond its use in winter, its strength and versatility make the PistenBully GreenTech suitable for an increasing number of applications on the toughest gradients of up to 100 %. One example: with a laser-controlled blade, the PistenBully can push layers of gravel both uphill and downhill with a tolerance of up to ± 1 cm. And in the same process, rear-mounted compacting plates compact the material. This enables you to achieve production rates of up to 6,000 m² per day.

The winch available on request even enables gradients of more than 100% and further increases traction and thrust.

The securing can be carried out flexibly via fixed anchor points or suitable mobile securing points.

The advantages of the PistenBully GreenTech:

- Can operate on steep slopes, available with 360° winch and 4.0 t pulling force
- Excellent pushing and levelling characteristics in combination with the All-Way-Blade
- No damage to flow channels, insulation or pipe lines being installed
- The topsoil is not too firmly compacted, guaranteeing that it can absorb enough rainwater
- Promotes "interlocking" of the soil during earthwork, allowing revegetation and thus preventing erosion
- Attachment of a range of auxiliary equipment e.g. for revegetation using a rotavator with a grass seeder unit or with a front cultivator and rear-mounted short seeding combination
- Short waiting times after emptying/drainage

Application:

- Construction of landfill sites in accordance with statutory provisions
- Spreading and compacting layers of crushed rock/gravel
- Moving large quantities of sludge in extreme conditions such as reclaiming marsh land in harbour areas
- For shifting and levelling drained pools, applying lime for disinfection, digging drainage trenches and tilling the soil
- With the help of special attachments and superstructures, the PistenBully GreenTech can be used for a wide range of tasks in fish and shrimp farms
- The PistenBully GreenTech is also suitable for constructing oyster beds at low tide



Harvesting peat

The all-season machine

The PistenBully GreenTech is a universal machine for peat excavation and can be used for the preparation of both milled and block peat. Its strengths include the exposure and distribution of wet peat and the renaturation and maintenance of old excavation sites. Biotope management in these reclaimed areas is becoming increasingly important, and here, the PistenBully GreenTech offers unique advantages, thus contributing to the conservation of the plant and animal populations typical for these areas and to the preservation of particularly endangered species. It also helps to protect, improve and reclaim their natural habitats, restoring the unique character, diversity and beauty of the landscape.

The advantages of the PistenBully GreenTech:

- High thrust of up to 9 tons
- Precise blade control
- Large footprint for optimum traction
- Excellent view of the front attachment area
- Low ground pressure for gentle handling of plants, small organisms and micro-organisms
- The ideal machine for the renaturation of peat fields

Can be operated with the following attachments:

- Standard All-Way-Blade up to 5,2 m in width
- Milled peat blade with rounded V2A steel edges and a volume of up to 7 m³
- Swath blade with 60° tilt to spread peat windrows
- Front levelling auger for the preparation of peat cutting fields
- Peat millers in various designs
- Loosening cultivator with up to 7 m working width
- Frost cultivator with up to 4,5 m working width
- Mowing and mulching tools for habitat care or the preparation of new excavation areas
- Trench cutters and peat pilers to build walls
- Transport crawler with special rear dump superstructure and increased payload



Mowing and mulching In any terrain

PistenBully GreenTech means extremely low ground pressure with the greatest possible manoeuvrability. And that makes the PistenBully GreenTech the perfect vehicle for mechanical mowing and mulching in a wide range of sensitive environments but also on slopes with optional winch. The vehicles work carefully and precisely

- on hillsides
- in ecologically valuable nature reserves, e.g. wetland meadows
- in biotopes or restored heathland/fens
- in inaccessible woodland areas

In short: The PistenBully GreenTech is the specialist machine for comprehensive landscape management!

The advantages of the PistenBully GreenTech:

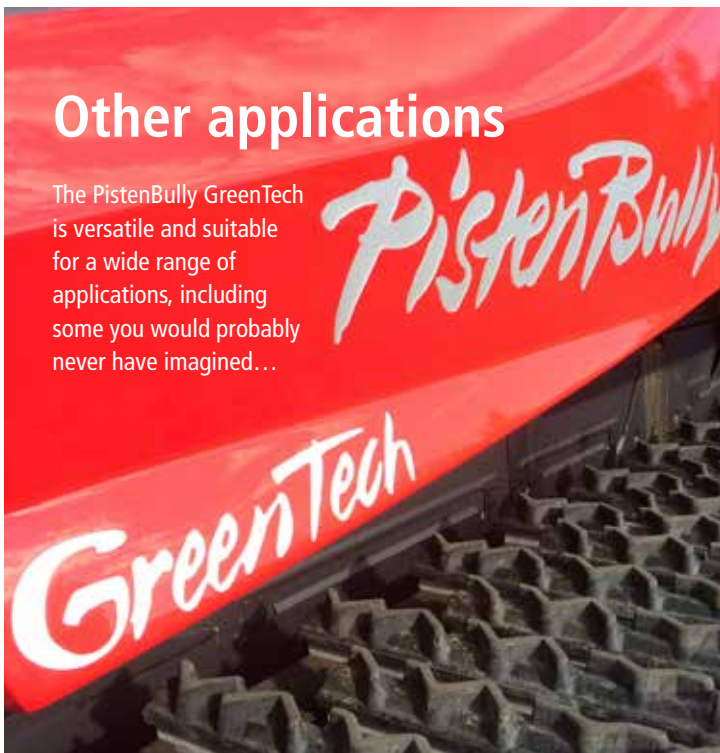
- Minimum ground pressure means rapid deployment
- Optional accumulator
- Three attachment areas (front, superstructure, rear)
- Three auxiliary pumps with a capacity of up to 340 litres at 406 bar
- As standard with fully synthetic high-performance hydraulic oil PEB 50, with biodegradability according to CEC standard
- Cyclone filter to remove foreign matter in the intake air

Application:

- Attachment of mowing and mulching tools to the front quick-mount system, which is fitted as standard
- Forestry mulchers
- Front or rear 3-point suspension with or without universal drive shaft
- Attachments mounted on the trailer
- Flail mower with tipping container or top-mounted round baler

Other applications

The PistenBully GreenTech is versatile and suitable for a wide range of applications, including some you would probably never have imagined...



Maize silage



Sawdust



Firefighting



Drainage basins



Wood chips



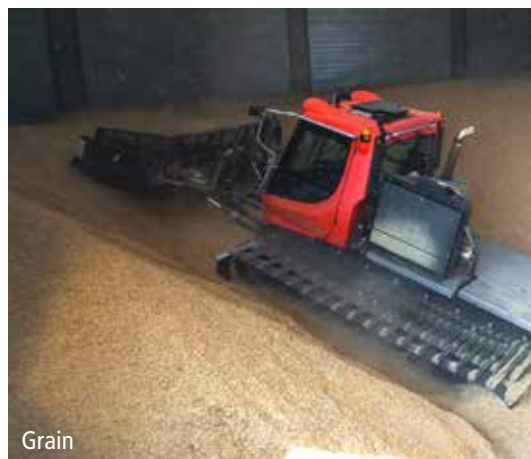
Agriculture



Agriculture



Winter application



Grain



Sugar production



Salt pan

Customer testimonials

From professionals for professionals



Silage (Hannes Schuler)

"The new PistenBully 600 Polar GreenTech is impressive compared to the PistenBully 300 Polar GreenTech by the fact that it behaves much more sensitively in blade control and while driving. The larger and quieter cab is also a major advantage. Whether it's in wholecrop silage or in corn, it always allows for confident performance even with large crop volumes."



Silage (Hubert Miller)

"In the 2020 harvest season, we pushed and compacted approx. 43,000 tons of chopped material (wholecrop silage and corn) with the PistenBully 600 Polar GreenTech. The machine convinced with its enormous "thrust", reliability and easy handling. Due to the larger cab, allround vision and driver comfort are better."



Peat harvesting (Christoph Behrens)

"I drive a PistenBully because I know I can rely on it. And if its excellent technology should fail, support is available quickly and without complicated procedures. My first 600 Polar GreenTech with winch has always given me excellent service, and I found it so efficient that I immediately ordered a second one."

Equipment

- PistenBully GreenTech vehicles from Kässbohrer Geländefahrzeug AG are designed for the toughest applications in difficult terrain.
- Thanks to their extremely low ground pressure, PistenBully GreenTech vehicles can be used on sensitive surfaces which will not support wheeled vehicles or where wheeled vehicles cannot be used.
- PistenBully GreenTech vehicles can be converted for almost any specialist requirements while retaining their tried-and-tested technical functionality.
- PistenBully GreenTech vehicles are used snow vehicles which are specially converted and reconditioned for summer use.

Standard



Powerful and reliable engine

Robust Mercedes diesel engines ensure reliable and economical working. A concept in which economy and ecology go hand in hand. The OM 460 LA with 490 hp and a displacement of 12,8 litres reaches its maximum torque of 2,200 Nm at only 1,300 rpm.



Hydrostatic drive

The hydrostatic drive offers a level of operating convenience not often found on work vehicles. The standard labyrinth lubrication system isolates the shaft oil seal rings against external influences.



Centralized lubrication system

As standard, the labyrinth lubrication is supplied with lubricants automatically and at intervals.



Maintenance-friendly access

For easy maintenance and cleaning, the cab and top frame can be tilted hydraulically in a comfortable way, regardless of whether an additional weight or a winch is mounted.



Simple and precise steering

A semi-circular steering wheel ensures reliable and precise steering. Auxiliary equipment on the front or rear can be operated comfortably with an ergonomically designed multifunction joystick.



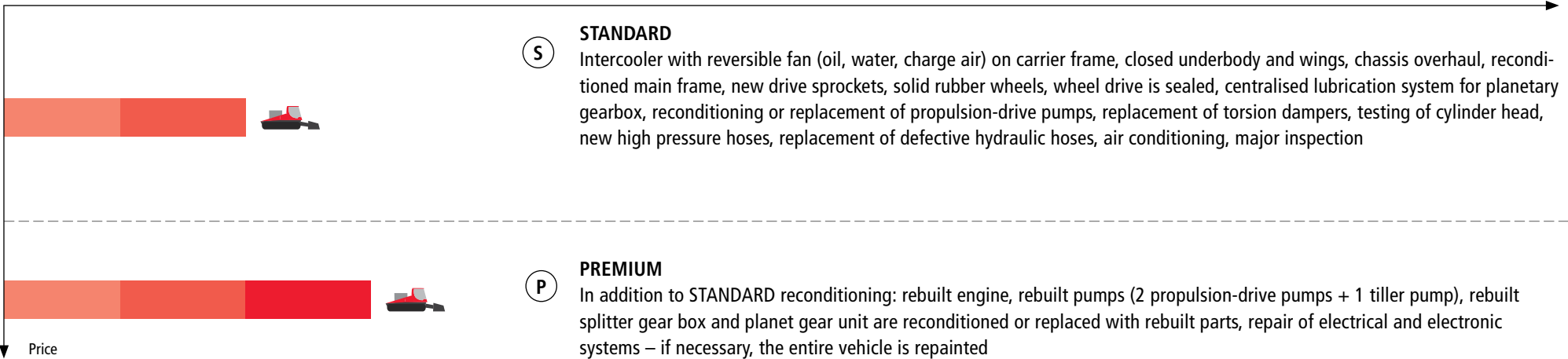
Stay cool

The powerful 3-in-1 intercooler for charge air, water and hydraulic oil ensures optimum cooling at temperatures of up to 35 °C. Soiling is automatically removed by the temperature-controlled reversible fan.

Reconditioning levels and options

The right vehicle for every application.

Condition/equipment



Options



X-Track chains



GreenTech All-Way-Blade



Front/High-pressure



Air conditioning



Additional weight 2,6t

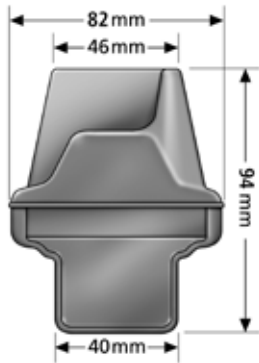


3-point rear power lift, Cat. 2, incl. universal drive shaft 1 3/8 hexagonal profile (also as 3-point front power lift)

X-Tracks, combi tracks or steel tracks

Depending on the specific requirements, the PistenBully GreenTech can be fitted with tracks of various types and widths.

- 3 m outside width, ideal for transport
- 4,2 m outside width for maximum traction



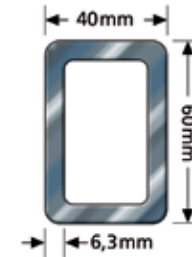
X-Track chain for silage applications

The high-grip X-Track chain is ideal for silage harvesting and landscape maintenance. The web of the X-Track chain combines an aluminium core with vulcanised rubber cladding. The profile of the high-quality rubber cladding gives the chain excellent grip. Rubber web ensure quiet running on hard surfaces and asphalt roads.



Combi track for earthworking and landfills

The combi track, tried and tested in winter applications, has aluminium cleats with Hardox steel edges. The cleats are 105 mm high and up to 1,648 mm in width, giving this track maximum thrust on the ground in special applications such as on landfills or for earthwork.



Steel track for landscape maintenance

The steel track was also developed for special applications such as peat excavation or work on landfills. Its cleats are 40 mm wide and 60 mm in height, making this track a little less aggressive than the combi track and thus also the perfect choice for landscape maintenance applications.



Steel drive sprocket

Wear-resistant steel drive sprockets are also available for special applications with high sand content.

Track type	Track width in mm	Vehicle width in mm	No. of webs	Web height in mm	Distance of belts in mm	No. of pcs.	Thickness of belts in mm
X-Track 780 mm	780	3,000	74	94	123,5	3	10/15
X-Track 865 mm	865	3,070	78	86	116,5	3	10/15
X-Track 975 mm	975	3,120	78	86	116,5	3	10/15
X-Track 1,150 mm	1.150	3,420	78	86	116,5	4	10/15
Steel track 865 up to 1,648 mm	865–1,648	3,070–4,200	78	60	116,5	3–5	10/15
Combi track 1,648 mm	1,648	4,200	78	105	116,5	5	10/15

FAQ's

How high is the maximum thrust of the PistenBully GreenTech?

The PistenBully GreenTech can move a maximum of 230–250 tons of silage per hour. Above this, a second vehicle is required for compacting.

Why should a vehicle with a lower weight be better for compacting than a heavier vehicle?

Because the All-Way-Blade spreads and compacts an optimum layer thickness of 10–20 cm. Also due to the special track cleats and the fact that each of the six running wheels drives over each individual track cleat, creating a shudder effect that compacts the silage more effectively than the wheels of a wheel loader.

Why don't you make the track narrower to further increase the ground pressure?

The power output of the PistenBully GreenTech (490 hp) is too high for a narrower track. If a narrower track were fitted, there would be a risk of it being damaged by the PistenBully GreenTech.

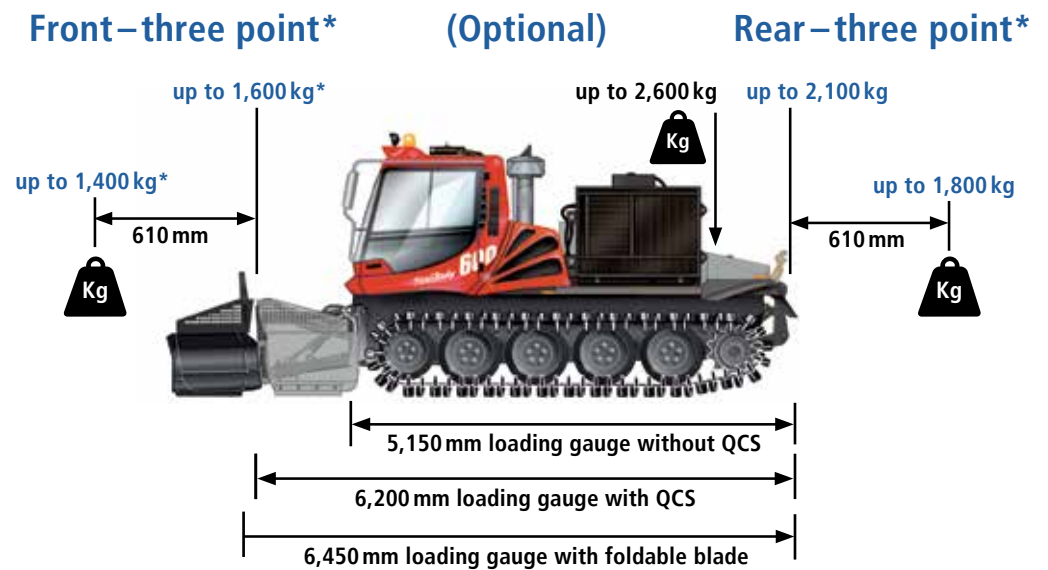
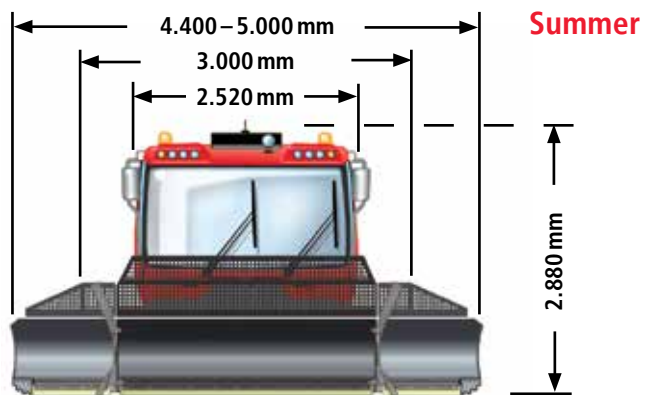
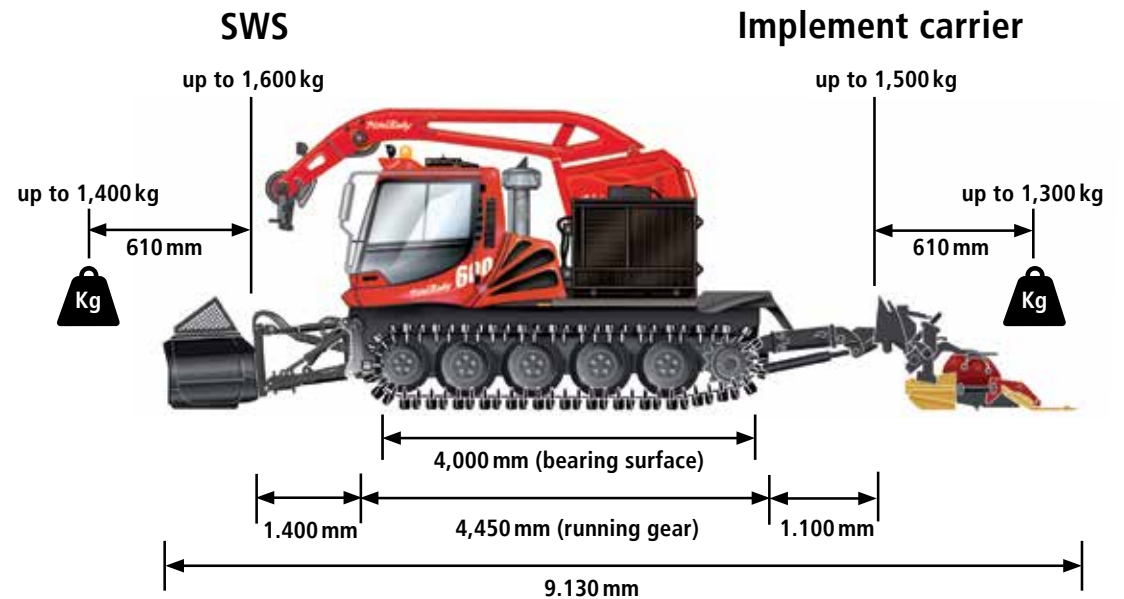
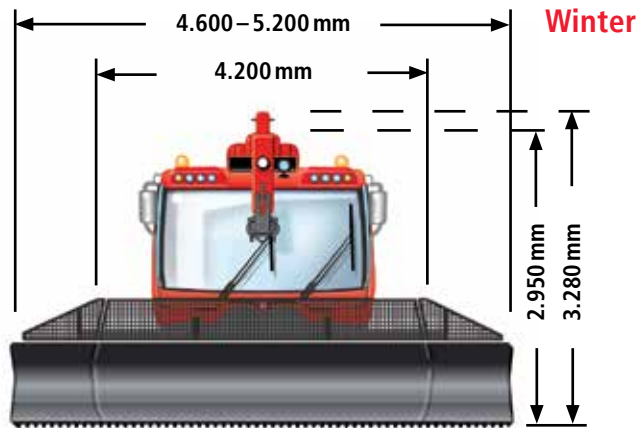
Why can't I buy a PistenBully from a ski resort? Surely that would be much cheaper?

A PistenBully as used in a ski resort lacks the special modification of the PistenBully GreenTech. This means that it is not suitable for use in summer, as the winter cooling system is not designed for temperatures over +15°C. Also, it is not equipped with the X-Track chain, which compacts the silage perfectly without damaging the surface. The web of the X-Track chain comprises an aluminium core with rubber cladding. The rubber cladding has a profile with a herringbone structure. This allows you to drive the vehicle safely over boggy or marshy ground. The hard metal edges and inserts of winter tracks, which are necessary for driving over snow, would cause severe damage to the floor of a silo.

Technical data

PistenBully 600 Polar GreenTech

Lifting power and dimensions



Transport

Quick and easy loading and unloading

Depending on the equipment version, the PistenBully GreenTech can be transported on a flat-bed trailer (load platform height 0,8–1,0 m). For harvesting > 200 t/h, it may be possible to use the towing vehicle as an additional rolling vehicle.



	PistenBully 300 GreenTech	PistenBully 300 Polar GreenTech	PistenBully 600 Polar GreenTech
Engine			
Type	Mercedes Benz OM 926 LA	Mercedes Benz OM 457 LA	Mercedes Benz OM 460 LA
Number of cylinders	6	6	6
Displacement	7,200 cm ³	11,970 cm ³	12,800 cm ³
ECE power rating	240 kW/330 hp	315 kW/430 hp	360 kW/490 hp
Max. torque	1,300 Nm at 1,200–1,600 U/rpm	2,000 Nm at 1,200 U/rpm	2,200 Nm at 1,300 U/rpm
Fuel consumption	from 11 l/h	from 13 l/h	from 16 l/h
Tank capacity	190 l	210 l	300 l

Driving capabilities

Speed	0–19 km/h, continuously variable	0–19 km/h, continuously variable	0–19 km/h, continuously variable
-------	-------------------------------------	-------------------------------------	-------------------------------------

Weights

Net weight with X-Track chain	11,000 kg*	11,000 kg*	12,200 kg** winch 11,700 kg**
Spec. ground pressure with X-Track chain	0,160 kg/cm ²	0,187 kg/cm ²	from 0,139 kg/cm ² from 0,174 kg/cm ² winch
Spec. ground pressure with mulcher***	0,098 kg/cm ²	0,113 kg/cm ²	from 0,100 kg/cm ² from 0,112 kg/cm ² winch

* incl. 2,400 kg additional weight, ** incl. 2,600 kg additional weight,

*** dependent on track version

Dimensions

Track width	2,300 mm	2,400 mm	2,350 mm
Min. width with X-Track chain	3,000 mm	3,000 mm	3,000 mm
Overall height (incl. air conditioning)	3,200 mm	3,200 mm	2,880 mm winch 3,280 mm (2,950 mm transport)
Ground clearance	approx. 350 mm	approx. 350 mm	approx. 350 mm
Load platform	2,300 mm x 1,920 mm (3,9 m ²)		