

PistenBully X Track

High performance all season



With the X track on your PistenBully it is possible to drive across wooded areas, meadows or swampland. The X track is a high performance track for the snow as well. During its development great care was taken to ensure good stability and grip pressure in the snow.



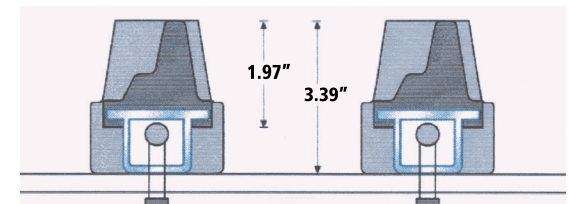
The X track features the proven Pisten Bully belt and cleat design. Component replacement enables cost effective repairs in contrast to endless track systems.



The X track cleat combines a steel core with a high quality vulcanized rubber encasement. The rubber encasement has a herring bone structure that gives the cleat excellent grip.



The X track provides traction when pulling snowmobile trail grooming drags in hard, icy snow conditions yet will not damage pavement when crossing roadways.



Model	Cleat height	Cleat length
PistenBully 100	3.39" (86 mm)	31.5" (800 mm)
TrailBully	3.39" (86 mm)	31.5" (800 mm)
400 Trail	3.39" (86 mm)	31.5" (800 mm)
400 Trail	3.39" (86 mm)	38" (975 mm)



KÄSSBOHRER ALL TERRAIN VEHICLES, INC.
8850 Double Diamond Parkway • Reno, NV 89521
775 / 857-5000 • www.pistenbullyusa.com

The manufacturer reserves the right to change any specifications or design without notice. The information contained on this brochure may be subject to amendment after print due to product modifications. 5/2014

PistenBully®