



**PistenBully 300 *Polar***

The one and only.

[www.pistenbully.com](http://www.pistenbully.com)

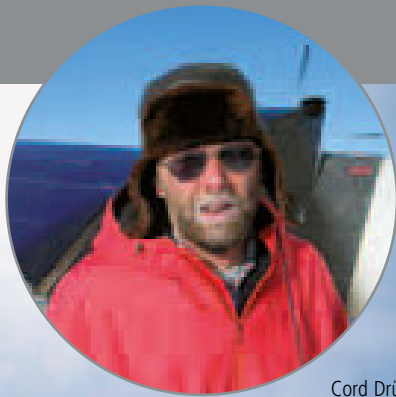
***PistenBully***®

# On top of the world.

Do you need a snow mover or a towing and supply vehicle for extreme low temperature? An adaptable base for cranes and passenger cabins, or a reliable special purpose vehicle that goes where others cannot? With the PistenBully 300 *Polar* you don't need to choose – it's one of the most versatile vehicles around. An innovative and reliable machine for work and transport that's already conquered the Antarctic, and what's more it's from the world's leading company for rough terrain vehicles. Sounds good doesn't it?

## From a famous name.

At PistenBully we're world market leader for our ski slope and trail grooming vehicles, and for good reason – our fleet of special-purpose vehicles have proved themselves time and again against the elements in 68 countries around the world. Part of Kässbohrer Geländefahrzeug AG, we have a proud history of innovation against the elements. Of ski slope and trail grooming vehicles; utility vehicles for work and transport in rough terrain. And the PistenBully 300 *Polar* is made of the same tough stuff.



Cord Drücker, Alfred-Wegener-Institut, Germany

**“ High winds, severe cold and extreme danger – Antarctica is a challenging place. Our PistenBully vehicles have been meeting these challenges for the last 30 years. ”**



# Top-performance in the eternal ice.

At PistenBully we've been operating in Antarctica since the 1980's. This means we've had time to work with our clients, refining our vehicles to be the best for polar work. We've become real polar all-rounders, and the pinnacle of this is the PistenBully 300 *Polar*.

The PistenBully 300 *Polar* is built to cope with the extreme conditions of the eternal ice. We focussed our design on outstanding performance, long-life and low operating costs that are all priorities in the ice shelf regions. Combine this with complete reliability and a truly versatile set-up and you can see why this machine is fast becoming a must have for research teams based in the Antarctic regions.

# Reliable in Antarctica.

The harder the conditions, the better it performs. Working in Antarctica is very different from normal snow operations. Man and machine have to cope with gale-force winds, average temperatures of -40°C to -50°C and endless ice. And that's a test that this PistenBully is more than ready for.

**Confidence when you really need it.** You never want to get into trouble in Antarctica. If any of the thousands of parts of your vehicle failed, your vehicle would fail too. That's why we've designed every minute detail to deal with the extreme operating conditions. This includes everything from using special types of steel, rubber and biological oil, to redesigning hydraulics and specially-developed pre-heating systems.

We make sure all our vehicles are tough, robust and perform well at all altitudes. It's what our clients expect of their PistenBully and we're happy to live up to their expectations.



# PistenBully 300 *Polar* – the unique all-purpose machine.

No other expedition vehicle comes close to the PistenBully 300 *Polar*. As a combined snow moving and towing machine it's a real power pack - with its high tractive power it can easily pull two or three sleds with a total weight of 35 to 40 tonnes, while pushing ice and snow with its sturdy pushing blade or snow blower. There is no need for an extra vehicle. And that's not all this amazing machine has to offer: It's a flexible all-rounder thanks to its extensive range of attachments and superstructures. Despite its high power, it is economical to run too. All this comes on top of the

normal things you'd expect from a polar vehicle. Its low ground pressure reduces the risk of sinking and ensures greater safety when operating on pathless terrain or sea ice – you can even save fuel by loading the PistenBully 300 *Polar* onto a sled. And for the perfect driving experience, the well-insulated heated cockpit provides unobstructed, all-round visibility and plenty of space for two drivers for a pleasant driving.



# One vehicle, so many applications.

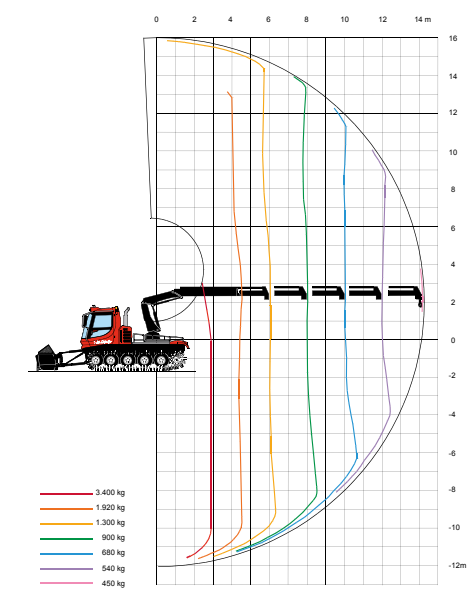
In its role as a towing vehicle, a transportation vehicle and a snow mover, the PistenBully 300 *Polar* is a pioneering vehicle, going where other vehicles cannot. It's certainly a versatile machine, and that's before you upgrade it with the extra facilities.

The key to expanding your PistenBully 300 *Polar* is its flexible platform designed to take a variety of superstructures, from cranes for construction and loading, to passenger cabins for working, living or sleeping quarters. This means you can use this one vehicle for a whole range of applications when you'd normally need separate vehicles.  
PistenBully are autonomous systems!



“ Force 8 winds, 50 below. Humans are not designed to withstand these polar conditions. We need machines to help us explore the Antarctic. PistenBully is a reliable and proficient partner – the harder the conditions, the better it performs. ”

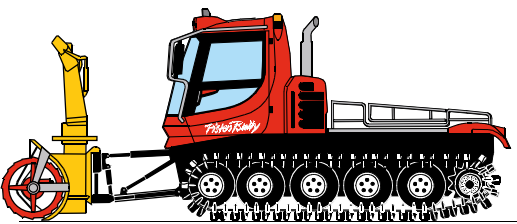
  
Alexandr Skorodumov, Antravers,  
St. Petersburg, Russia



**Construction and loading.**  
With a few adjustments, your PistenBully 300 *Polar* can transform into the complete construction vehicle.

The CE-certified, radiocontrolled HIAB hydraulic crane has a lifting torque of 78 kNm and a rotation angle up to 415°. It extends hydraulically to a height of 14.2 metres. This makes the machine perfect for lifting and loading jobs, such as setting up supply depots or unloading containers. You can even fix a transportation bucket to the front of the vehicle.





**Moving snow and ice.**  
As anyone who works in the Antarctic knows, the terrain is often impassable because of broken ice and drifting snow.

But this is where the PistenBully 300 *Polar* really comes into its own. Once your vehicle is kitted out with a large pushing blade, snow blower or transportation bucket, you'll see its superiority as a snow mover, often clearing the way for other vehicles.

Attach a snow tiller to compact the snow hard enough to be used as a landing strip for supply planes, and once you've cleared the snow, the machine is ideal for grooming and clearing work around the station. It's a real all-rounder in the snow – but what more would you expect from PistenBully?



**Flexible Passenger Cabin.**  
If your team is travelling long distance with a PistenBully 300 *Polar*, there's no need to waste time setting up rest camps – just fit a passenger cabin onto the platform.

This cabin has an independent heating system and can be used as working or pleasant living and sleeping quarters. For shorter journeys you can use the cabin to transport up to ten people, improving your travel into a safe journey rather than a feat of endurance.



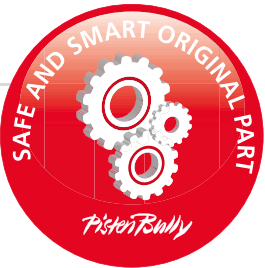
**PistenBully as a recovery vehicle.**  
The vehicle's power and manoeuvrability make it the ideal aid in hazardous situations. Using its electric winch, it can free vehicles which are trapped in snow or extract itself from difficult situations.

# The all-round, carefree package.

When you buy a PistenBully, you're not just buying a machine. Our PistenBully service concept guarantees your vehicle will always be ready for action – even in the wilds of Antarctica.

With training, advice and information-exchanges, we'll help you become self-sufficient so you've got complete control of the vehicle. And if the worst comes to the worst and you can't find a solution on the ground, our Antarctic-experienced technicians will help by phone or internet, every hour of every day.

Our clients have learnt from experience that PistenBully are not only easy to service but also cost-effective. So it's hardly surprising that 14 nations across more than 40 Antarctic stations put their faith in the multi-talented PistenBully 300 *Polar*. And we're sure it'll be perfect for you too.



## Technical Specification PistenBully 300 *Polar*

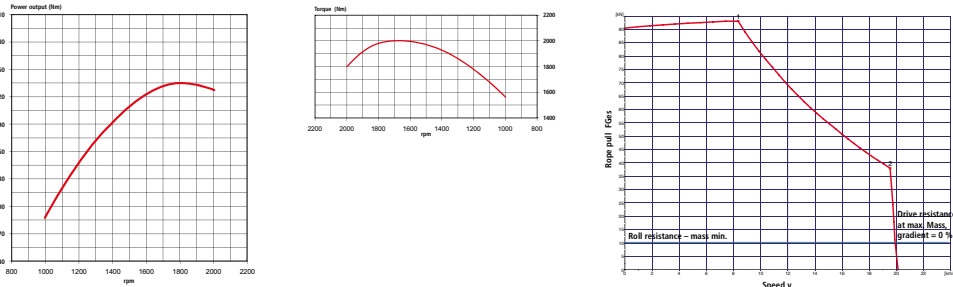
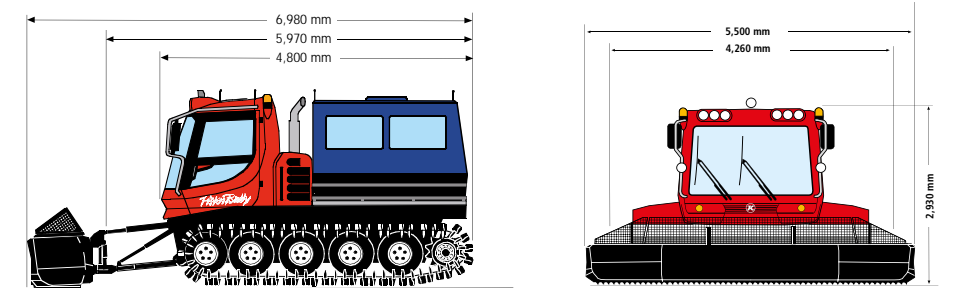
Engine	
Engine Type	Mercedes Benz, OM 460 LA
Cylinders	6-cylinder in-line engine with turbocharger and charge-air intercooler, with electronically controlled pump-injector fuel supply and thermostatic fan clutch
Power output (ECE)	335 kW (455 hp), EUROMOT III A and EPA TIER 3
Max. torque	2,000 Nm at 1,200 rpm
Displacement	12.8 l / 12,800 cm <sup>3</sup>
Fuel consumption	from 22 l / h
Fuel tank capacity	370 l with 2 auxiliary fuel tanks each with 80 l volume

## Dimensions

Width	without tracks:	2,600 mm (102.5")
	over steel tracks:	4,260 mm (168")
Height with cab tilted		3,385 mm (133")
Overall height		2,930 mm (115")
Length with All-Way-Blade		8,400 mm (214")
Ground clearance		350 mm (14")
Load area		2,230 x 1,920 mm/4.3 m <sup>2</sup> (88"x 75.5"/5yd <sup>2</sup> )

## Weight

Tare weight with steel tracks	8,400 kg (18,518 lbs.)
Gross weight limit incl. attachments	12,000 kg (26,455 lbs.)
Payload on platform without atthcments	2,500 kg (5,510 lbs.)



## Performance data

Speed, continuously variable	0-21 km/h (0-13 mph)
Spec. ground pressure with steel tracks	from 0.063 kg/cm <sup>2</sup> (0.90 psi)

## Attachments

Front	12-way pushing blade, transportation bucket, front two-stage snow blower
Rear	MultiFlex snowtiller
Platform	Passenger cabin, hydraulic crane



### **Kässbohrer Geländefahrzeug AG**

Kässbohrerstraße 11, 88471 Laupheim

Phone: +49 (0) 73 92/9 00-0, Fax: +49 (0) 73 92/9 00-4 45  
www.pistenbully.com, E-Mail: info@pistenbully.com

### **Austria**

Gewerbestraße 173, 5431 Kuchl

Phone: +43 (0) 62 44/4 00 10, Fax: +43 (0) 62 44/40 01 11  
www.pistenbully.at, E-Mail: office@pistenbully.at

### **Switzerland**

Bruneggerstraße 45, 5103 Möriken

Phone: +41 (0) 62/8 87 70 50, Fax: +41 (0) 62/8 87 70 51  
www.pistenbully.ch, E-Mail: info@pistenbully.ch

### **Italy**

Via Galileo Galilei, 32, 39100 Bolzano

Phone: +39 04 71/93 30 27, Fax: +39 04 71/93 29 75  
www.pistenbully.it, E-Mail: info@pistenbully.it

### **France**

Kässbohrer E.S.E.

Portes de Tarentaise, 73790 Tours en Savoie

Phone: +33 (0) 4 79/10 46 10, Fax: +33 (0) 4 79/10 46 40  
www.pistenbully.fr, E-Mail: info@pistenbully.fr

### **Finland**

Formatic Finland OY AB

Vallgrundvägen 124, 65800 Replot

Phone: +358 6 352 11 20, Fax: +358 6 352 04 40  
www.formatic-by-k.com, E-Mail: tore@formatic.fi

### **USA**

Kässbohrer All Terrain Vehicles Inc.

750 A South Rock Boulevard, Reno Nevada 89502

Phone: +1 (0) 7 75/8 57 50 00, Fax: +1 (0) 7 75/8 57 50 10  
www.pistenbullyusa.com, E-Mail: contact@katvpb.com



**KÄSSBOHRER GELÄNDEFahrZEUG AG**

